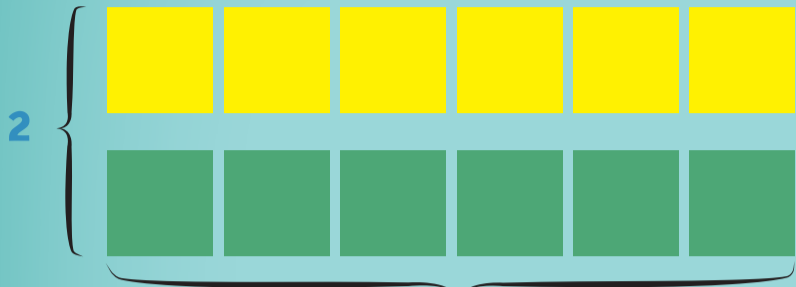


MALNEHMEN

multiplikation

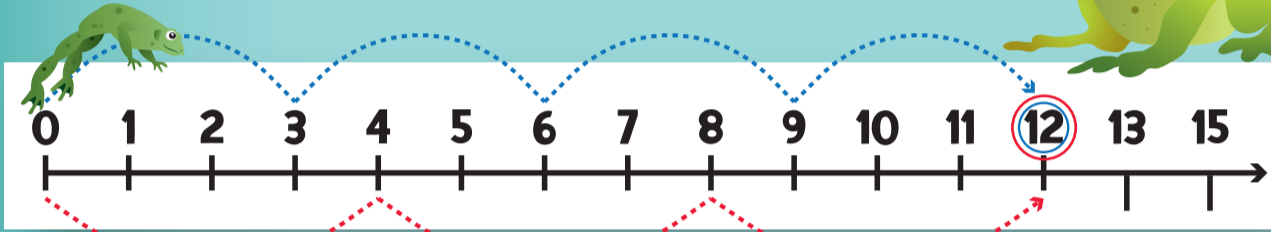


$2 \cdot 6 = 12$
2 Gruppen von 6
 $6 + 6 = 12$

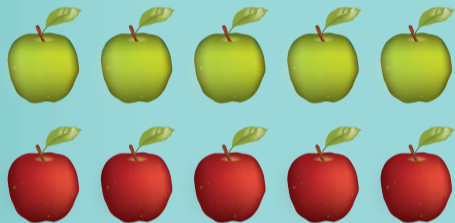
oder



$2 \cdot 6 = 12$
6 Gruppen von 2
 $2 + 2 + 2 + 2 + 2 + 2 = 12$



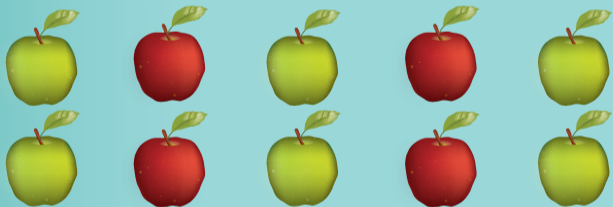
$4 \cdot 3 = 12$
4 Sprünge von 3 oder 3 Sprünge von 4



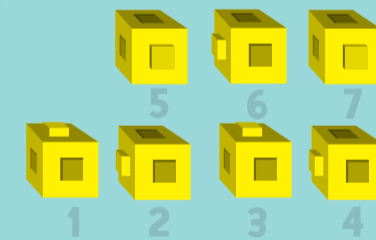
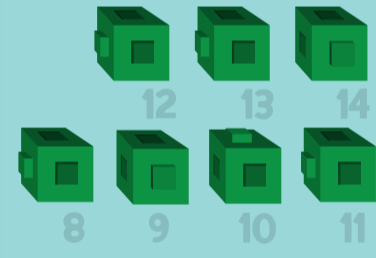
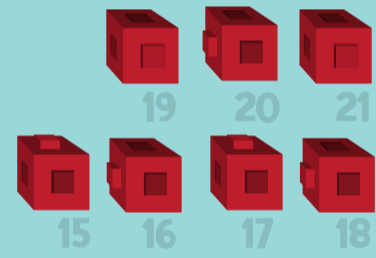
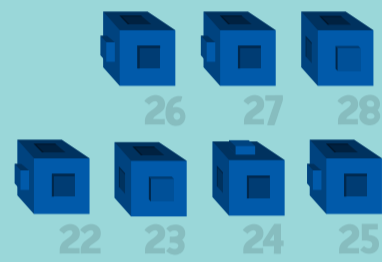
$2 \cdot 5 = 10$

oder

$5 \cdot 2 = 10$



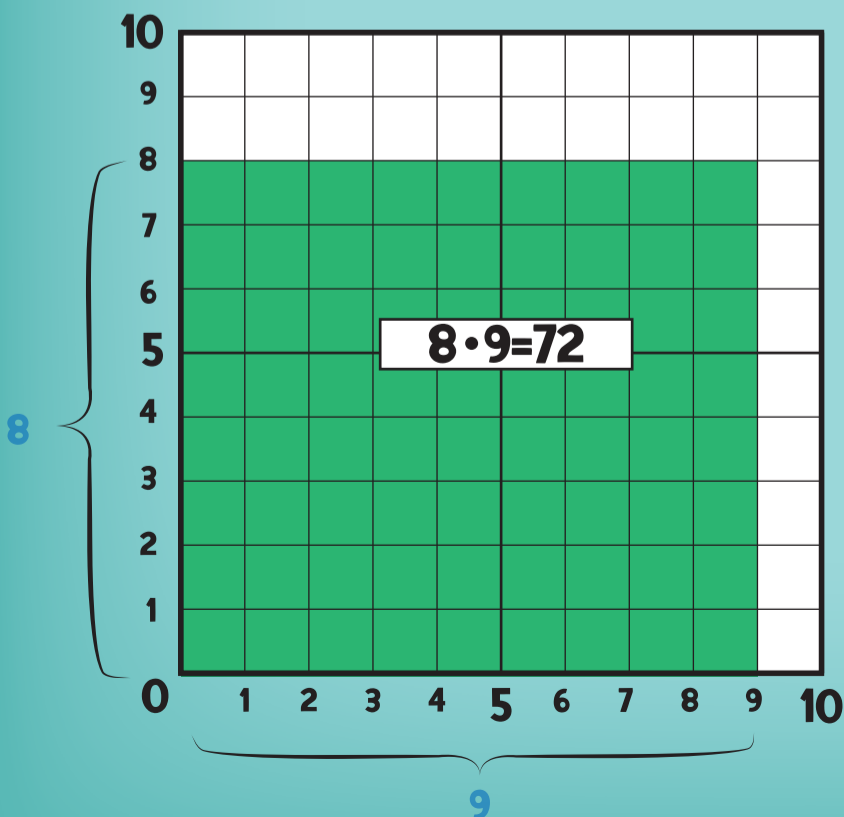
$3 \times 2 = 6$
 $3 * 2 = 6$
 $3 \cdot 2 = 6$
Malzeichen



$7 \cdot 4 = 28$

$4 \cdot 6 = 24$

oder



$9 \cdot 7 = 63$

Multiplikator · Multiplikand = Produkt